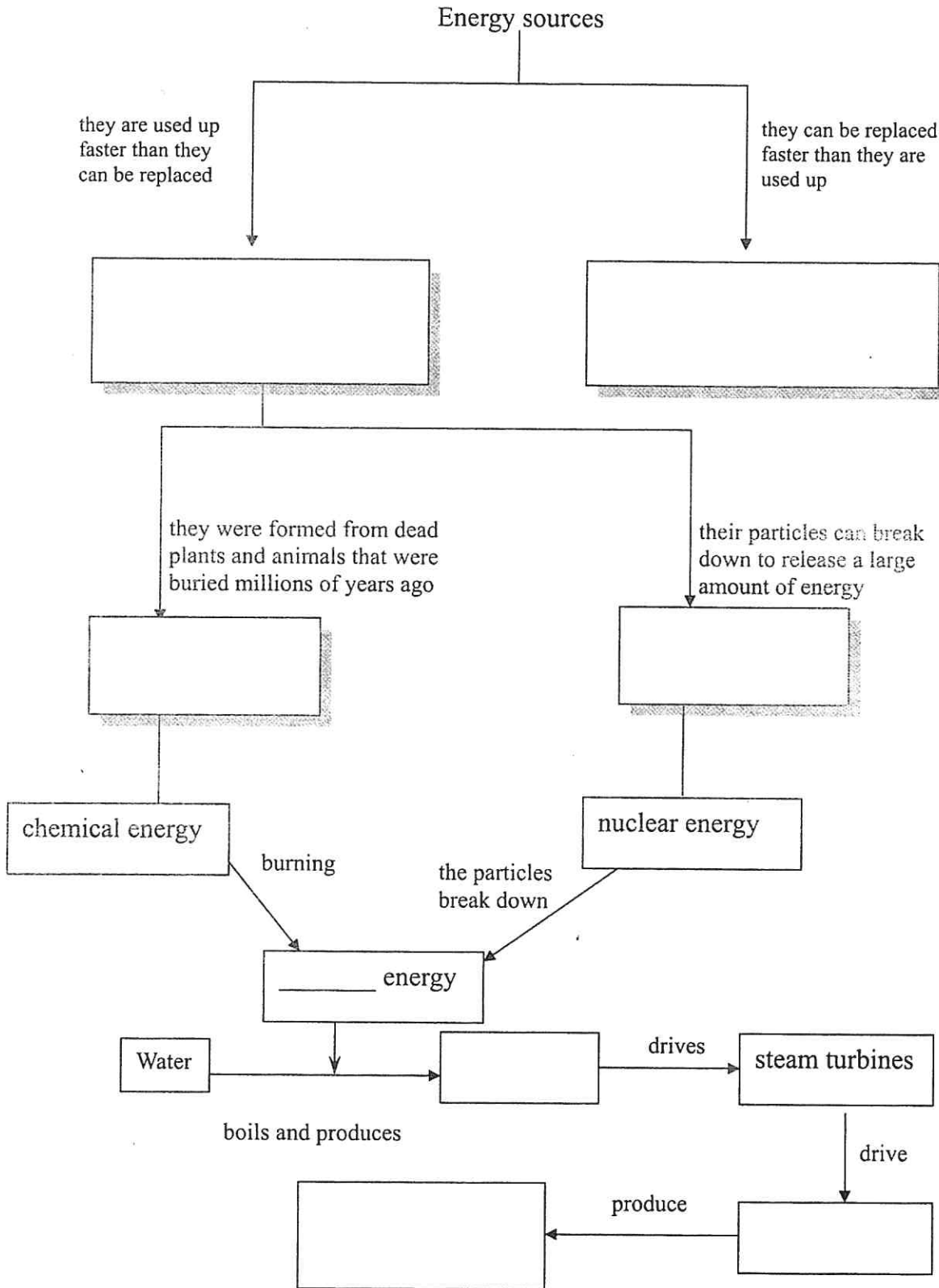
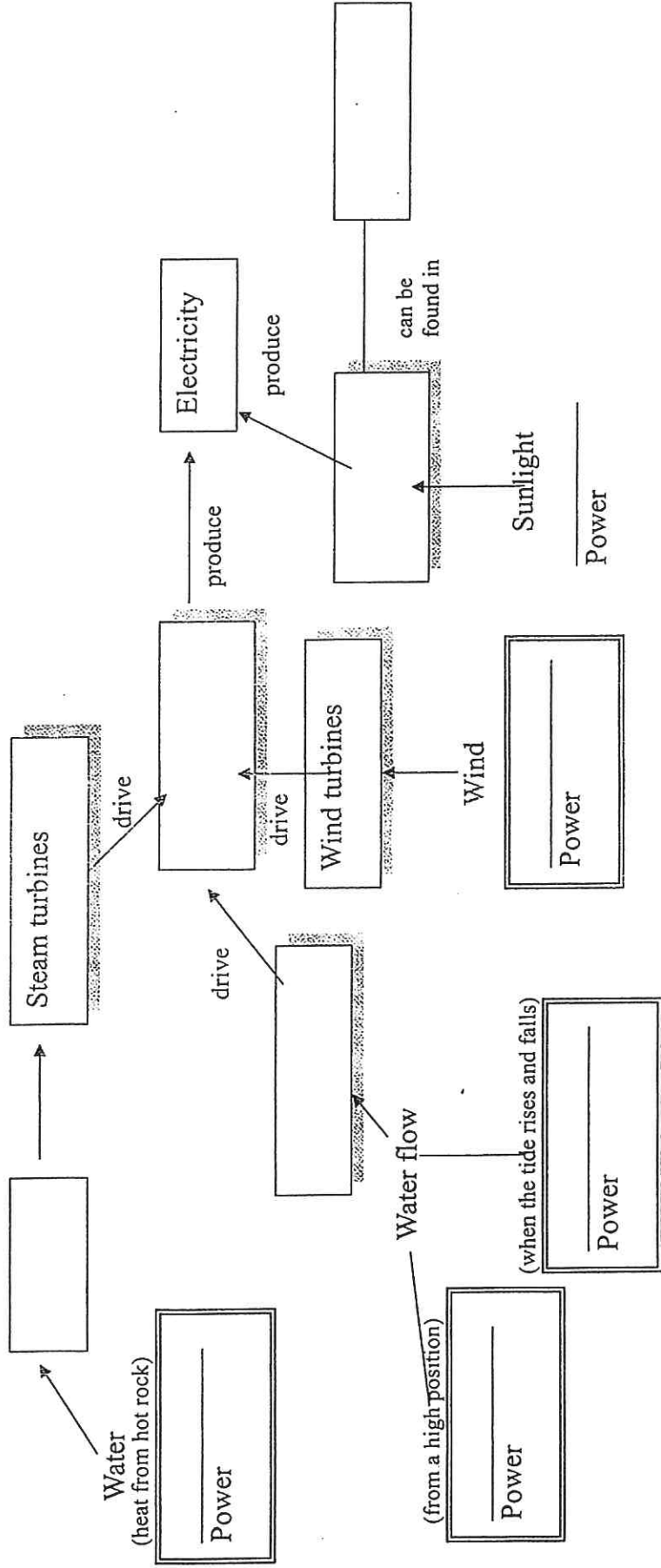


### Diagram 4: Energy Sources



(Worksheet 5)

Diagram 3: Renewable Energy Sources for Generating Electricity



Worksheet 6

The questions below are about renewable and non-renewable energy sources.

*Use the phrases provided to answer the following questions in complete sentences (except Q3 and Q7). Do not look at the passage.*

(Paragraph 1)

1. What is the difference between renewable energy sources and non-renewable energy sources?

*(can be replaced/ are used/ faster)*

---

---

---

2. Explain why people need to find other new methods to generate electricity.

*(most of our energy/ non-renewable energy sources/ will be used up)*

---

---

(Paragraph 2)

3. Give an example where solar power is used.

---

4. What are the geographical features of a country which uses wind power to generate electricity?

*(windy/ a lot of space)*

---

---

5. Where should a dam be built in order to make use of the tidal power?

*(across/a river mouth)*

---

---

6. What are the bad effects on the environment when we use hydroelectric power or tidal power to generate electricity?

*(cultural sites along the river/ wildlife living along and in the river)*

---

---

---

(Worksheet 6)

(Paragraph 3)

7. Give one example of fossil fuels.

---

8. Explain how fossil fuels are formed.

*(plants and animals/ died/ were buried deep underground / millions of years ago)*

---

---

---

9. Give one advantage and one disadvantage of using nuclear fuels for generating electricity.

*(a large amount of heat energy/ nuclear wastes/ dangerous radiation)*

---

---

---

---