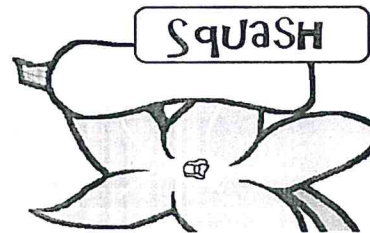


Amoeba Sisters Video Recap of *Plant Reproduction in Angiosperms*

1. What characteristics are common in angiosperms?



2. A topic emphasized in this clip is that not all **fruits** are sweet. Or even edible! Every plant that forms a flower must have a fruit. How would you define a "fruit?" How can fruits be helpful in seed dispersal?



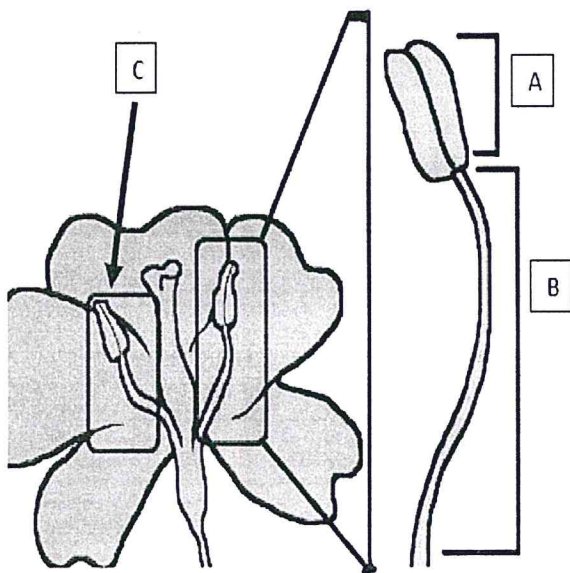
3. Flowers can contain one or both genders of **flower parts**. Label A, B, and C.

A is the _____.

B is the _____.

C is the _____.

All of these are which gender? _____



4. Flowers can contain one or both genders of **flower parts**. Label D, E, F, and G.

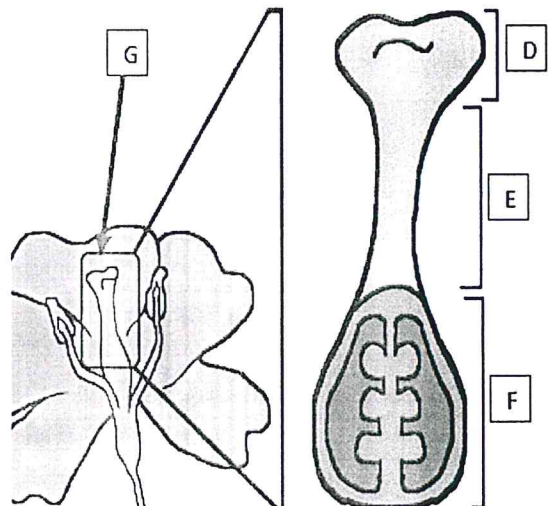
D is the _____.

E is the _____.

F is the _____.

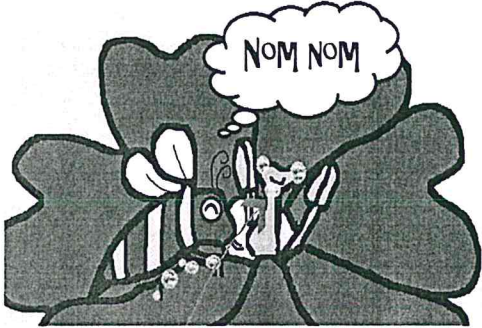
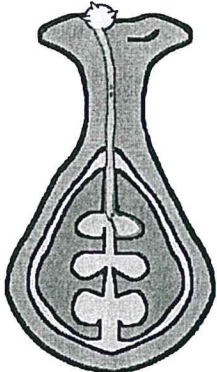
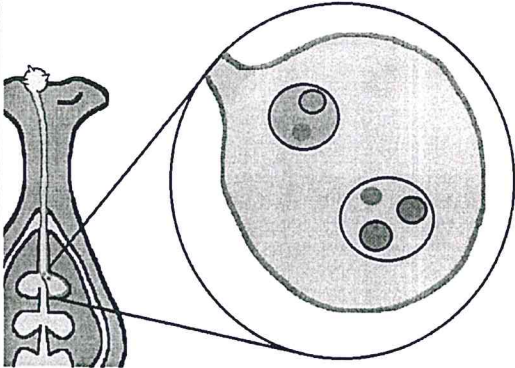
G is the _____.

All of these are which gender? _____



Narrate Pollination and Double Fertilization in Angiosperms

The pictures are in order, but it's your turn to briefly narrate pollination and fertilization using the pictures. You must use all of the following words at least once (they are in a randomized order): **pollinator**, **seed**, **ovary**, **ovule**, **zygote**, **double fertilization**, **sperm cell(s)**, **stigma**, **pollen**, **anther**, **pollen tube**, **endosperm**, and **fruit**. Cross the words off to help you keep track of usage!

<p>5. Pollination</p> 	<p>Brief Description:</p>
<p>6. Pollen Tube Germination</p> 	<p>Brief Description:</p>
<p>7. Fertilization</p> <p>INSIDE OVULE</p> 	<p>Brief Description:</p>

