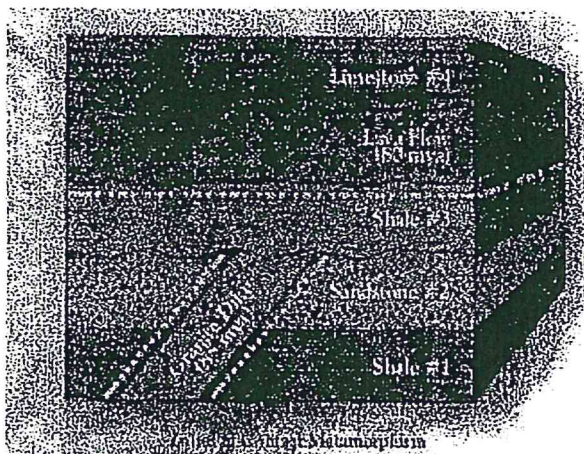


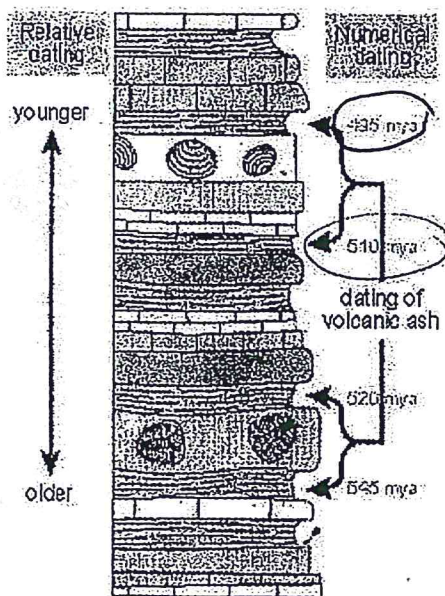
Name: Answers

Hour: _____

Fossil Unit - Study Guide



1. Shale #3 is younger than the Granite Dike.



2. According to this sample above, in what range of years were fossils present?

495 mya - 510 mya

520 mya - 545 mya

3. What is the difference between numerical dating and relative dating?

Numerical = exact time/years

relative = comparing 2 things to determine which is younger and older

4. Why are fossils found in sedimentary rocks but not in others?

Sedimentary rocks are the only rock that do not use heat to create them.

5. Describe the law of superposition.

Y = Younger over older O

6. If someone told you "The Earth has always been how it is today," what would you tell them? Provide scientific evidence to justify your answer.

Disagree because:

- technology (cars, building, etc)
- new landmasses

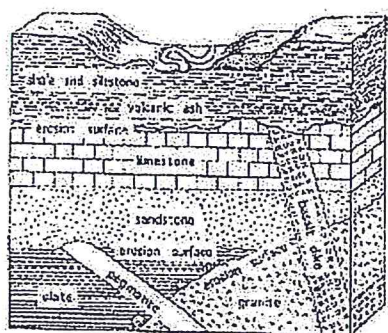
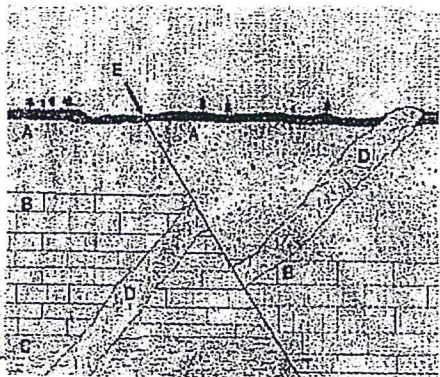
- Evidence of fossils
- Evidence of changing rock

7. If fish fossils were found in the desert, scientist could infer:

Before it was a desert, it had to have been a lake, pond, ocean, etc.

8. Using the diagram to the right, list the rock layers in order from oldest to youngest.

CBADE



9. Shale and siltstone are younger than the basalt dike. (older/younger) Why?

Because the shale and siltstone are above the basalt dike



Highly magnified view of single-celled fossil found in the slate (prokaryotic microorganism)



Trilobites found in the limestone



Trace fossils: dinosaur fossils found in the shale and siltstone

10. Which rock layers have the same relative age? (List all of them.)

1 and 8

2 and 9

3 and 10

11. List the layers in order from youngest to oldest.

6, 7, 1/8, 2/9, 3/10, 4, 5

