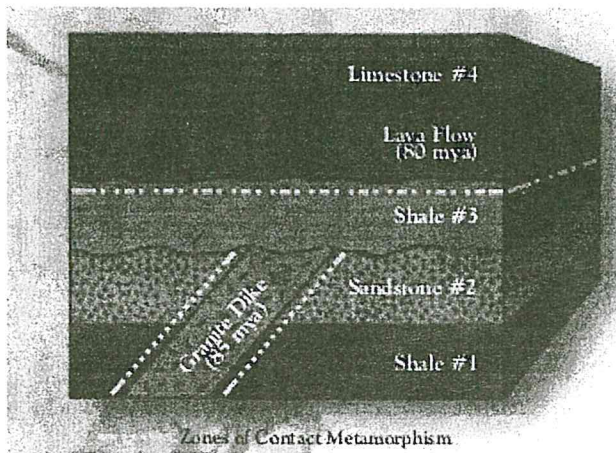
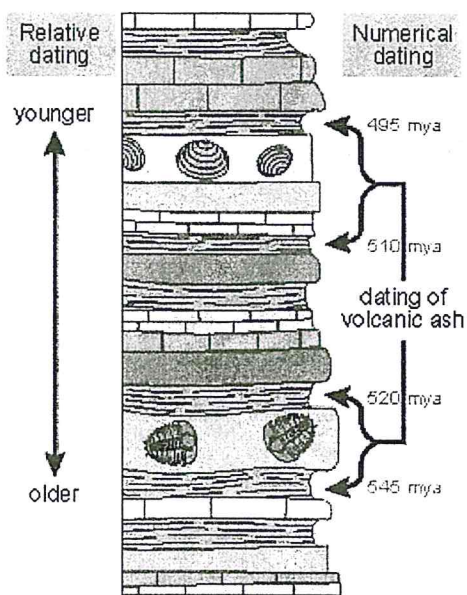


Name: \_\_\_\_\_ Hour \_\_\_\_\_

## Fossil Unit - Study Guide



1. Shale #3 is \_\_\_\_\_ than the Granite Dike.



2. According to this sample above, in what range of years were fossils present?

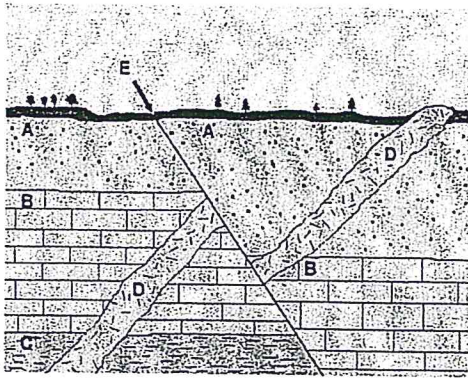
3. What is the difference between numerical dating and relative dating?

4. Why are fossils found in sedimentary rocks but not in others?

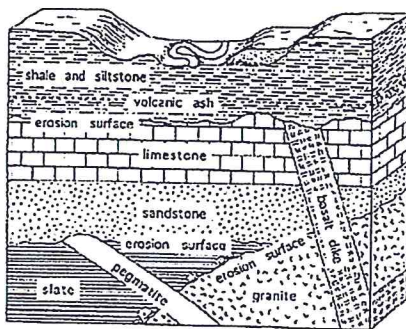
5. Describe the law of superposition.

6. If someone told you "The Earth has always been how it is today," what would you tell them? Provide scientific evidence to justify your answer.

7. If fish fossils were found in the desert, scientist could infer:



8. Using the diagram to the right, list the rock layers in order from oldest to youngest.



9. Shale and siltstone are \_\_\_\_\_ then the basalt dike. (older/younger) Why?



Highly magnified view of single-celled fossils found in the slate (acritarchs and bacteria)



Trilobites found in the limestone



Triceratops dinosaur fossils found in the shale and siltstone

10. Which rock layers have the same relative age? (List all of them.)

11. List the layers in order from youngest to oldest.

